

RELIABILITY PACKAGE

Power and Utilities

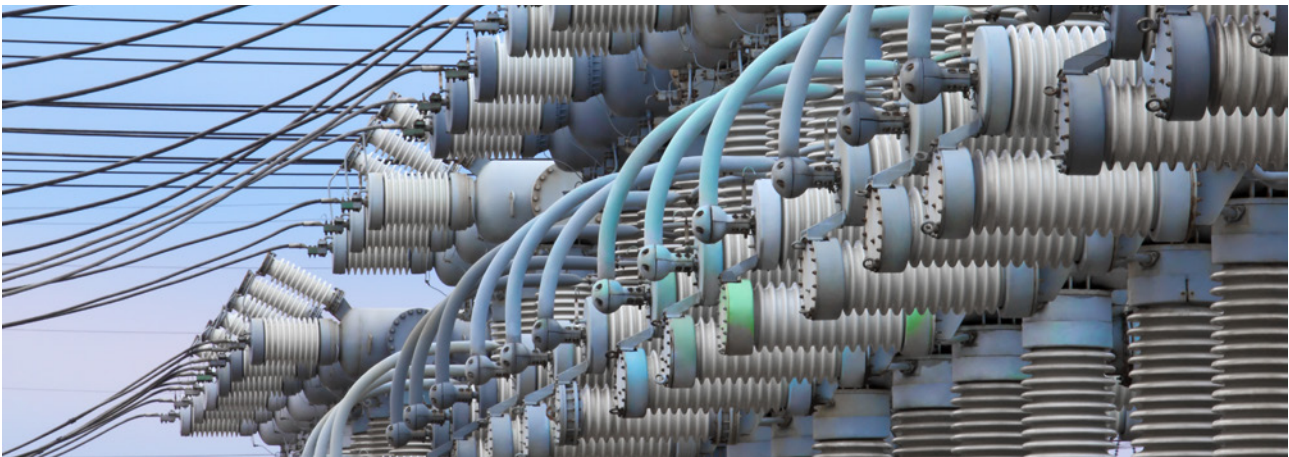
OIL AND
GAS

HEALTHCARE
AND
COMMERCIAL

POWER AND
UTILITIES

DATA
CENTRES

MINING
AND HEAVY
INDUSTRY



High Voltage Industry Solutions

Megavar provides a unique range of Industry Solutions designed for major power users with complex industry-specific needs.

Industry Solutions are made up of three carefully chosen Service Suites. We offer great value to our Industry Solutions clients, with a bundled discount and the ability to add additional Service Suites at the same discounted rate.

Megavar brings you a unique combination of engineering expertise, industry knowledge, and implementation capability. One of the great advantages of choosing Megavar is our comprehensive offering of unbiased electrical testing, maintenance and engineering services including complete acceptance testing, commissioning, maintenance testing and engineering analysis.

From our five service locations, we offer 24/7 service coverage for our clients Australia-wide.

Power and Utility Solutions

Your system reliability is critical and we understand that seconds of outages can mean millions in lost revenue and fines from the regulator.

Our expert engineers and technicians have the experience, capabilities and resources to help power and utility operators manage condition monitoring and preventative maintenance to minimise system minutes of downtime. Megavar will assist you to get reliability and efficiency from your electrical assets and ensure the highest levels of availability.

Our experts can customise solutions to support your operational goals. Our solutions for mining and heavy industry:

- Increase system availability and efficiency
- Reduce overall costs
- Monitor asset reliability
- Ensure 24/7/365 power to critical systems
- Optimise distribution systems
- Upgrade and extend the life of aging assets.



Recommended Service Suites

<h3>Commissioning and Startup</h3>	<p>Verify proper installation and ensure trouble free energisation. Avoid costly errors, delays, outages, damage, re-work and excessive operating costs. Baseline your operating data.</p>	<ul style="list-style-type: none"> • Client's engineer • Inspection and Test Plans • Protection and Control Commissioning • Plant Commissioning • SCADA Commissioning
<h3>Preventative Maintenance</h3>	<p>Reduce maintenance costs and improve serviceability with scheduled inspections and testing, prompt repairs, and quick access to spares.</p>	<ul style="list-style-type: none"> • Protection Relays • Circuit Breakers and Switchgear • Online Partial Discharge Surveys • Battery Systems • Optional Support Service
<h3>Condition Monitoring</h3>	<p>Predict and avoid failure, plan outages, repairs and replacements. Extend equipment performance, reliability and life expectancy.</p>	<ul style="list-style-type: none"> • Thermography • Oil Analysis • Online/Offline PD Detection • Tan Delta • SF6 Leak Detection • SFRA/Dirana Transformer tests • ELCID/RSO generator tests

Options you might prefer

<h3>HV Compliance</h3>	<p>Meet your responsibilities to ensure your HV equipment is compliant with Australian Standards, with good documentation and systems.</p>	<ul style="list-style-type: none"> • HV Switching • Operations and Maintenance Manuals • Compliance Audits • Earth Compliance Testing
<h3>Optimisation Assessment</h3>	<p>Uncover profit by finding the root cause of lost performance and points of failure. Verify protection and fault ratings. Analyse risk and reliability and make informed decisions on capital investments.</p>	<ul style="list-style-type: none"> • Short Circuit Coordination Studies • Reliability, Protection Setting and Grounding Studies • Power Tariff and Quality Assessments • Harmonic, Load Flow and Power Factor Analysis
<h3>Emergency HV Response</h3>	<p>Unexpected outages pose serious financial and safety risks and production losses. Get up and running quickly with trouble shooting, damage assessment and repairs, 24/7.</p>	<ul style="list-style-type: none"> • HV Switching • Commissioning and Startup • Repair • Installation • Audits and Inspections